

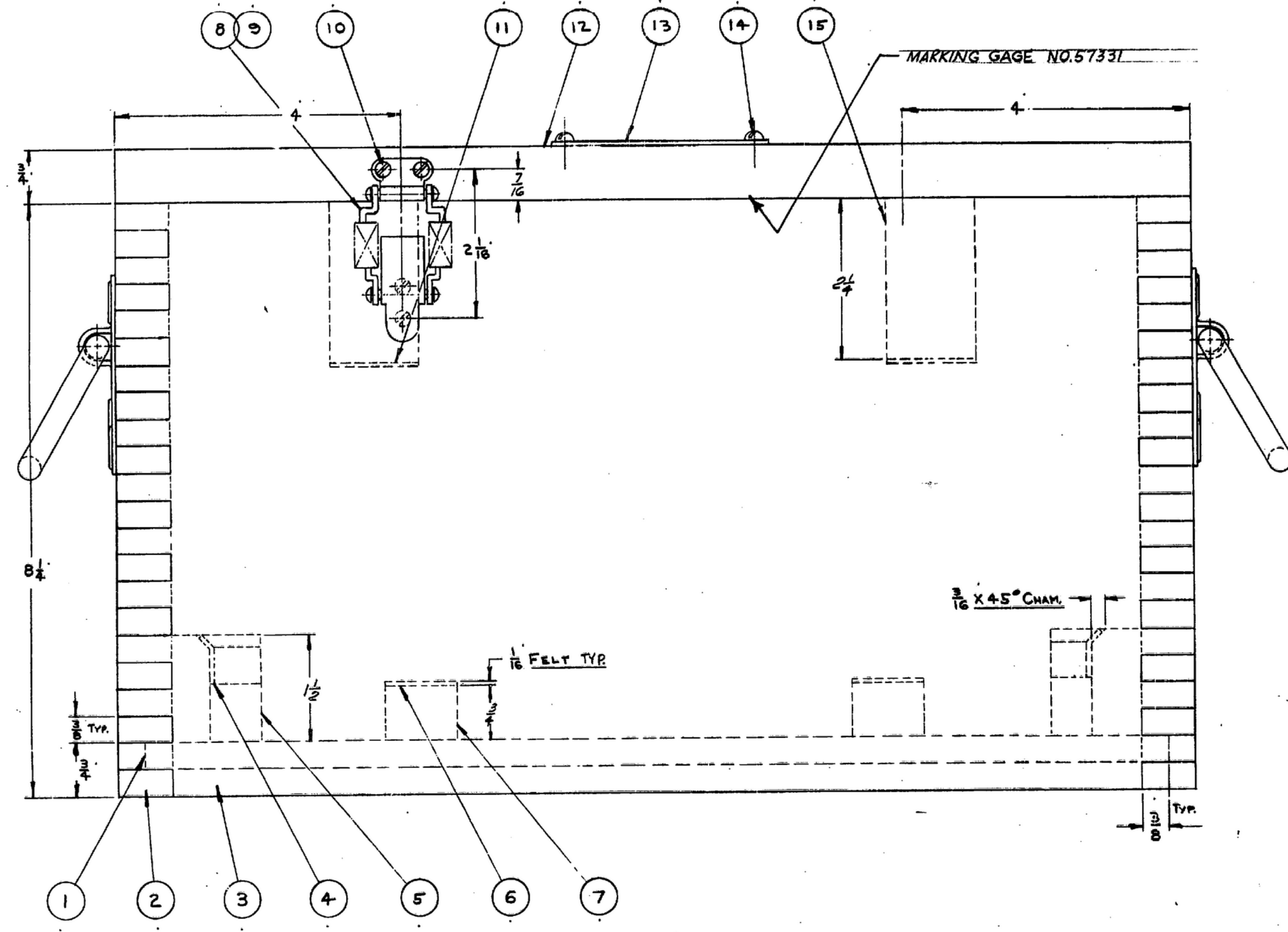
UNLESS OTHERWISE SPECIFIED, DIMENSIONS AND TOLERANCES ARE TO BE IN INCHES. DIMENSIONS ARE TO BE SHOWN ON FRACTIONS DECIMALS ANGLES. DIMENSIONS ARE TO BE SHOWN ON FRACTIONS DECIMALS ANGLES. DIMENSIONS ARE TO BE SHOWN ON FRACTIONS DECIMALS ANGLES.

THIS DRAWING HAS BEEN PREPARED BY THE ENGINEER AND MAY BE REPRODUCED AND USED IN CONNECTION WITH ANY OTHER PROJECT WITHOUT THE WRITTEN PERMISSION OF THE ENGINEER.

NOTE: *FOR INFORMATION ONLY, CONTRACTOR MAY AT HIS OPTION DEVIATE FROM THESE PROCESS DETAILS

REVISIONS ORIGINAL ISSUE 25-10-65

BY	DESCRIPTION	DATE	APPROVAL



- NOTES:
- SUPPLIED BY:
 - 1. CORBIN CABINET LOCK DIVISION
THE AMERICAN HARDWARE CORPORATION.
NEW BRITAIN, CONNECTICUT. OR EQUAL
 - 2. MASTER-CARR SUPPLY CO.
640 WEST LAKE STREET
CHICAGO 6, ILLINOIS. OR EQUAL
 - 3. COMMERCIAL DOUGLAS FIR PLYWOOD EXTERIOR
TYPE, GRADE SOUND 2, SIDES EXTERIOR PER
SPEC. MIL-P-66.
 - 4. ALL JOINTS INCLUDING BOTTOM SHALL BE
BONDED WITH ADHESIVE PER SPEC. MIL-A-397
TYPE I, CLASS I, AND APPLIED PER SPEC. MIL-A-5400
 - 5. BREAK ALL UNNECESSARY SHARP EDGES.
 - 6. BEFORE ASSEMBLY OF HARDWARE, PADDING
AND NAMEPLATE, ALL INSIDE AND OUTSIDE
SURFACES OF CASE SHALL BE FINISHED AS
FOLLOWS, SAND AND APPLY ONE COAT OF
WOOD SEALER PER SPEC. MIL-S-13518, STENCIL
AS INDICATED AND APPLY TWO COATS OF
CLEAR SPAR VARNISH PER SPEC. TT-V-118.

NO.	QTY	DESCRIPTION	MATERIAL	REMARKS
19	1	19 SIDE 3/4 x 8 1/4 x 15	PLYWOOD	
18	2		BRASS	
17	12		BRASS	
16	1		HARDWOOD MM-L-736	
15	2		BRASS	
14	4		AL. ALLOY Q8-A-318	
13	1		PLYWOOD	
12	1		FELT C-F-206	
11	2		BRASS	
10	8			
9	2			
8	2			
7	2		PLYWOOD	
6	2		FELT C-F-206	
5	4		HARDWOOD MM-L-736	
4	4		FELT C-F-206	
3	1		PLYWOOD	
2	2		PLYWOOD	
1	1		PLYWOOD	

UNLESS OTHERWISE SPECIFIED DIMENSIONS ARE IN INCHES TOLERANCES ON FRACTIONS DECIMALS ANGLES ± 1/32	ORDER # 08719-PH-55-93 SIGNAL CORPS	REVIEWED PME	APPROVED M.H. PME	DATE 25-10-65	SCALE FULL
APPLICATION					

CASE, GAGE

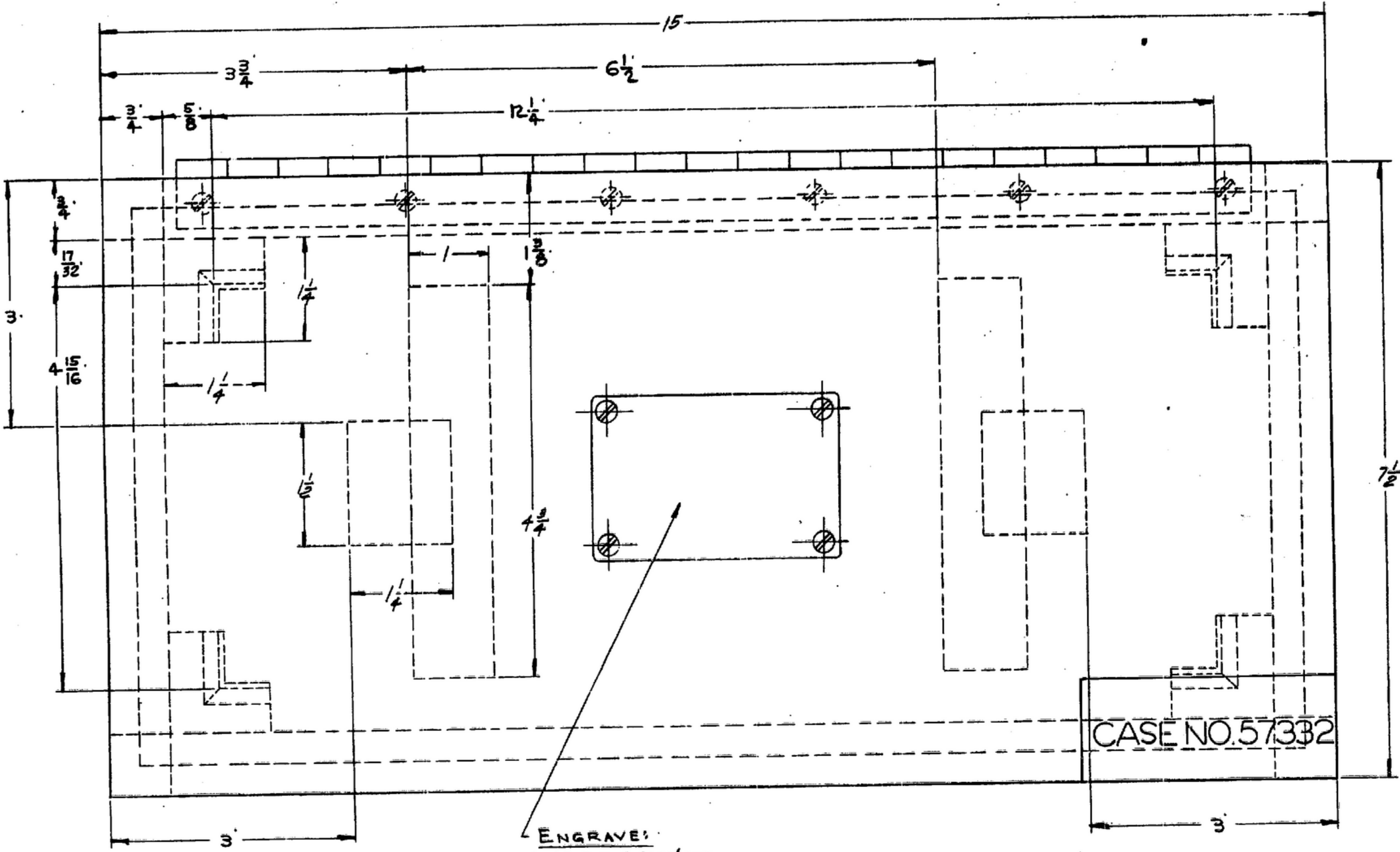
DEPARTMENT OF THE ARMY
SIGNAL CORPS ENGINEERING
LABORATORIES
NONMOUTH NEW JERSEY
SM-D-57332
SHEET 1 OF 2

SYN	DESCRIPTION	DATE	APPROVAL
-----	-------------	------	----------

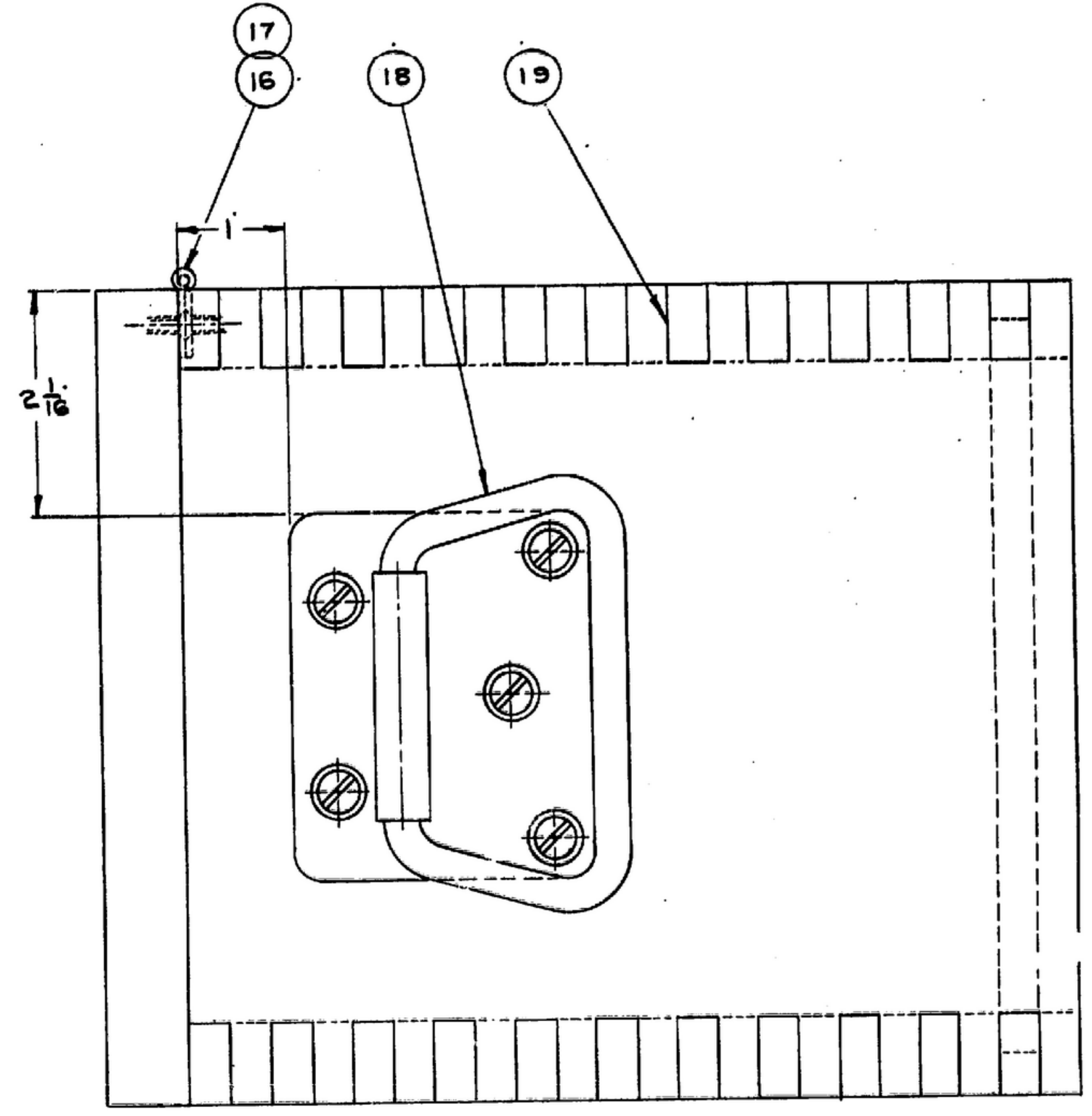
NOTE:
*FOR INFORMATION ONLY, CONTRACTOR MAY AT HIS OPTION DEVIATE FROM THESE PROCESS DETAILS

UNLESS OTHERWISE SPECIFIED, DIMENSIONS ARE IN INCHES. DIMENSIONS ARE TO BE TAKEN FROM THE CENTER OF THE HOLE UNLESS OTHERWISE SPECIFIED. DIMENSIONS ARE TO BE TAKEN FROM THE CENTER OF THE HOLE UNLESS OTHERWISE SPECIFIED. DIMENSIONS ARE TO BE TAKEN FROM THE CENTER OF THE HOLE UNLESS OTHERWISE SPECIFIED.

THIS DRAWING IS THE PROPERTY OF THE SIGNAL CORPS ENGINEERING LABORATORIES. IT IS TO BE KEPT IN THE OFFICE OF THE DRAWING OFFICER AND NOT TO BE LOANED, REPRODUCED, COPIED, OR IN ANY MANNER DISSEMINATED TO ANY OTHER PERSON OR ORGANIZATION WITHOUT THE WRITTEN PERMISSION OF THE DRAWING OFFICER.



ENGRAVE:
GAGE FOR R-390A/URR
CAUTION - PRECISION INSTRUMENT
HANDLE WITH CARE.
REPLACE GAGE IN ASSIGNED
POSITION IN CASE WHEN NOT
IN ACTUAL USE.
BOX 7 OF 13



PART NO.	DESCRIPTION	MATL.	MATL. SPEC.
----------	-------------	-------	-------------

UNLESS OTHERWISE SPECIFIED DIMENSIONS ARE IN INCHES TOLERANCES ON FRACTIONS DECIMALS ANGLES $\pm \frac{1}{32}$ $\pm \frac{1}{64}$ $\pm \frac{1}{2}$		ORDER # 08719-PH-55-98 SIGNAL CORPS REVIEWED P.M.E. APPROVED M.H. P.M.E. DATE 25-10-55	CASE, R-390A/URR GAGE	DEPARTMENT OF THE ARMY SIGNAL CORPS ENGINEERING LABORATORIES PORT MONMOUTH NEW JERSEY SM-D-57332 SHEET 2 OF 2
SCGL-57592	APPLICATION	SCALE FULL	WHEN REFERRING TO THIS DRAWING STATE DRAWING NO., APPLICABLE ISSUE, AND DATE.	